

Mojave Riverwalk Trail Master Plan

Preferred Alignment Map: Reach 4
FIGURE 9

30' Required Trail Setback/Separation
From BNSF Outer Track
See Figure 8 for Illustration

Natural Area Trail
See Common Greenway Elements
for trail cross section and regulatory signage

Existing Maintenance Road
"Tree Line Road"

Existing Nature Trail for Handicapped
Proposed Interpretive Loop
from primary trail



- LEGEND**
- Trailhead Location
 - Preferred Alignment
 - Key Connection
 - Existing Restroom
 - Neighborhood Access
 - Secondary Trail



TRAIL TYPE KEY

- | | |
|--|--|
| A Multi-Use Path: 12' wide asphalt surface | B Pre-Fabricated Concrete/Steel Bridge |
| C Multi-Use Path: 12' wide concrete surface | E Equestrian Use: 6' Wide Native Soil Pathway |
| N Multi-Use Path: 12' wide gravel surface | |

Spur Trail to Neighborhood Access Point
See Common Greenway Elements
For Illustration

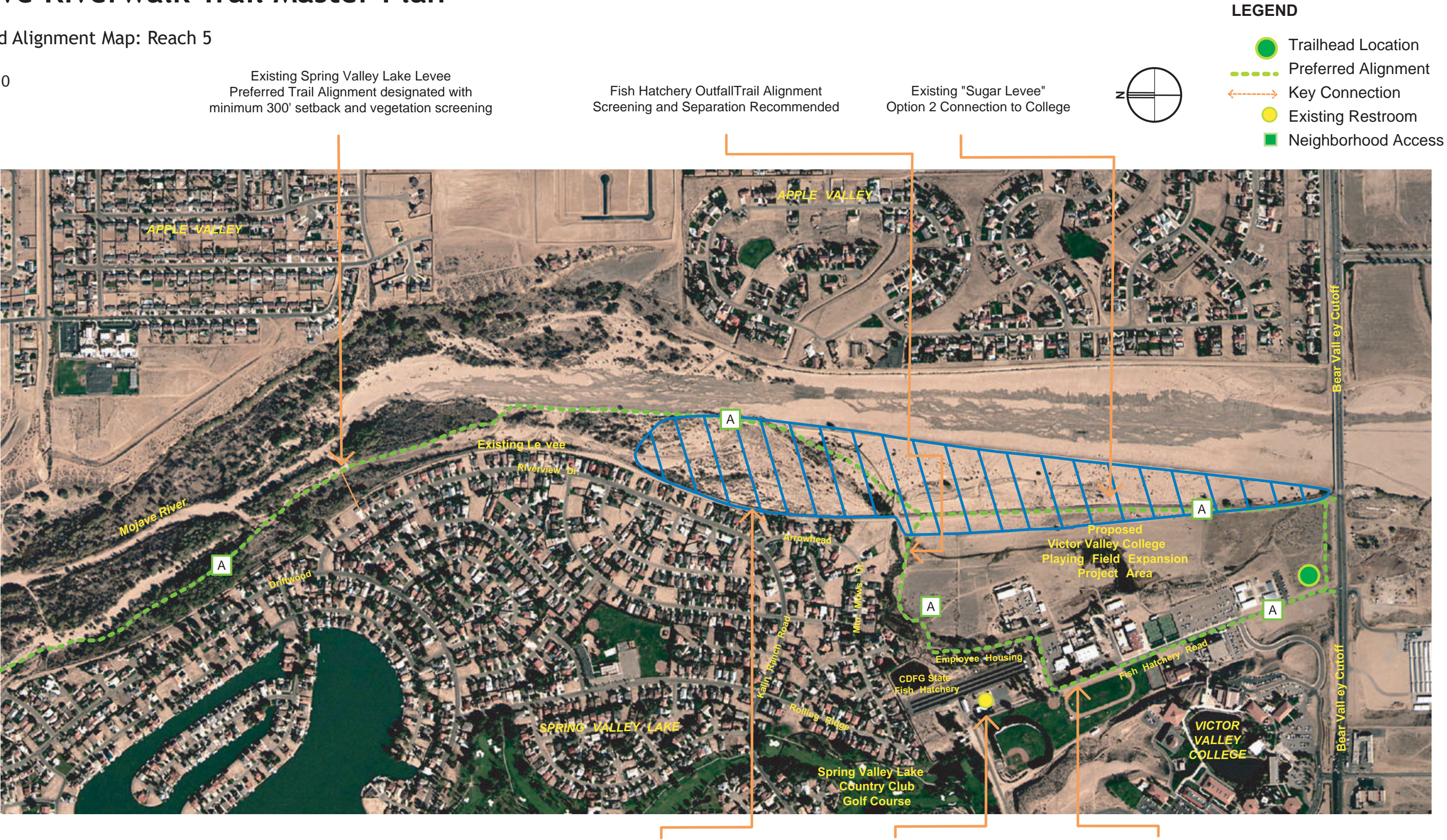
Existing Spring Valley Lake Levee
Preferred Trail Alignment designated with
minimum 300' setback and vegetation screening



Mojave Riverwalk Trail Master Plan

Preferred Alignment Map: Reach 5

FIGURE 10



TRAIL TYPE KEY

- | | |
|--|--|
| A Multi-Use Path: 12' wide asphalt surface | B Pre-Fabricated Concrete/Steel Bridge |
| C Multi-Use Path: 12' wide concrete surface | E Equestrian Use: 6' Wide Native Soil Pathway |
| N Multi-Use Path: 12' wide gravel surface | |